



PHOTO BY: LAURENCE CAWLEY

21 YEARS of Giving PEOPLE and NATURE *a Chance* **ANNUAL REVIEW 2009-10** Green Light Trust is an environmental education charity working with communities.

THE TRUST WAS SET UP FOLLOWING A LIFE-CHANGING EXPEDITION TO SAVE A PAPUA NEW GUINEA RAINFOREST BY ITS FOUNDERS IN 1990.

21 years later, as the climate crunch bites, the charity has a heightened saliency by providing vital services focused on protecting and enhancing the environment and community life across the East of England, and beyond.



WHO WE ARE, WHAT WE DO & WHY

With many years experience we're a dedicated group of environmental professionals with a passion for what we do.

We are skilled practitioners in various aspects of environmental education, community outreach and business consultancy. We also work internationally to forge alliances and bring worldwide expertise to both local and global issues.

At the Green Light Trust we all like to think we can make a difference in the world – whether in business, in our children's lives, in our local community, or by leaving a legacy for future generations.

We're passionate about:

- enhancing children's environmental education
- strengthening local communities and working with socially disadvantaged groups
- helping business to reduce its carbon footprint through better resource management and developing effective corporate social responsibility initiatives
- conserving our natural heritage for the future.

"The work of the Green Light Trust is essential in setting up and sustaining groups like ours. The assistance we have had cannot be measured in time or financial terms. We feel as if we are a child of Green Light and as such have had a very happy, supportive upbringing". GAIL KOPOWITZ, CHAIR, WEREHAM WILDLIFE WOODLAND

We offer:

- Environmental training opportunities for children, young people, disadvantaged groups, businesses and local communities across the region. For example, these include our Forest Schools programme, conservation training and our Community-owned *WildSpace* programmes.

- A stunning award-winning venue for hire – The Foundry

"The building is truly inspirational. It showcases the best in sustainability, both traditional and modern. What's more it's a wonderful place to meet."

CHRIS PREIST, MASTER SCIENTIST,
HEWLETT PACKARD



FINANCIAL INFORMATION 2009

In the year ended 31st December 2009, Green Light Trust had an operational income of £263,203 and expenditure of £263,922.*

“We realise the importance of supporting environmental causes and the Green Light Trust is an excellent organisation that we are delighted to support towards a sustainable future.”

CEO, VIRGIN MONEY

	2009	2008
INCOME	£	£
Grants – General	5,601	3,000
Grants- Restricted	108,658	91,054
Donations	55,024	24,419
Interest on Capital	53	2,460
Projects	86,219	94,884
Trading & Rental Income	5,198	5,418
Sponsorship	2,450	50,001
	263,203	271,236
EXPENDITURE		
Projects	181,778	258,344
Trading & Administration	79,064	5,091
Depreciation	3,080	3,080
	263,922	266,515

* The small deficit for the year of £719 was funded from reserves.

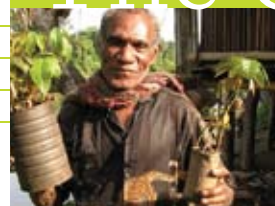
FUNDERS & SPONSORS

The Trust has a diverse range of funders that make our work possible. Currently we lack a statutory ‘core funder’ but we are still working on this, and our situation has much improved with some excellent guaranteed income from the Tudor Trust and many others.

Our profound and deepest thanks go to our sponsors: Virgin Unite; Virgin Money; Cecil & Larter; Copestone Copywriters Ltd; Timbmet; Higher Nature; Ridgeons; The Boshier-Hinton Foundation, Havebury Housing Partnership and our grant funders: Tudor Trust; Mulberry Trust; Big Lottery Fund; Fowler, Smith & Jones Charitable Trust; Essex Community Foundation; Mrs Smith & Mount Trust; ECOMINDS; Albert Hunt Trust; Hedley Foundation; Charles French Charitable Trust; IIED – International Institute for Environment; Diamond General and Education Trust; Heritage Lottery Fund; Mark Leonard Trust; HCD Memorial Fund and Forestry Commission.



The Green Light Story



In 1988, Ric Edelmann and Nigel Hughes travelled to Papua New Guinea in search of primary rainforest. It had been their long-held wish to witness this most prolific and spectacular ecosystem.

With local tribesmen, they trekked through the dense Hunstein forest of the Upper Sepik, home to some of the 34 different birds of paradise, and many species of flora and fauna then still unclassified.

They learnt that the entire region – 2,000 square miles of pristine forest – was earmarked for the biggest logging operation yet to hit New Guinea. There and then they pledged to support the people in protecting their unique homeland.

They were also asked what was happening in the UK to protect our woodlands and wild spaces for future generations. Ric and Nigel’s commitment to developing these initiatives led to the forming of Green Light Trust.

The Hunstein Range remains the source of much of Green Light Trust’s inspiration.

FROM TINY ACORNS – MIGHTY OAK TREES GROW

“Green Light Trust is proudly celebrating its 21st birthday. As we enter our third decade I reflect on the extraordinary success we have created. We “saved a rainforest” by producing three environmental dramas that went on tour by dugout canoe in the Hunstein Range of Papua New Guinea. This helped to raise awareness amongst local people of the value of their rainforest, the threat it was under and the urgent action that they needed to take to save it.

We created our own Lawshall community woodland, which has become the exemplar for 56 other WildSpaces mostly through the East of England. We take the lead on OCN Forest School Leadership development. We built ourselves an award-winning carbon neutral HQ that laid our foundations for the carbon reduction society within which we all need to live.

In our 21st year I look forward to embedding and expanding our vital work, serving our communities of interest and locality. I trust that Green Light will continue to lead the way in creating a more “connected to nature” society to benefit many generations to come.”

Nigel Hughes, Chief Executive MAY 2010

Getting in the Money – New Developments & What's Next?



This year has been marked by a wide range of solid achievements - with £266,000 of new funding secured and dynamic partnerships across the East of England region established. The Green Light Trust can now help more disadvantaged 'communities of interest' groups and focus its work in some of the less prosperous localities.

New funding highlights include:

- A project with Suffolk Mind Partnership to deliver a one-year pilot training programme with 24 adults with mental health problems, with a successful *Ecominds* grant. The project is being evaluated by the Centre for Environment & Society, based at Essex University.

- A partnership project to deliver a confidence and training programme to 120 NEET (not in education, employment and training) young people (see overleaf for more information).

- A programme of targeted training with *Suffolk NEET* young people and school excluded children – in pilot form – commenced in September 2009 with some ad-hoc charitable trust and local authority funding, enabling the charity to develop the training provision to suit the specific needs of this vulnerable and rather troubled client group. Based on this successful initial work a fundraising initiative was launched – in partnership with a local youth counselling charity and schools - to secure funding to undertake a similar targeted programme in Harlow.

- A partnership with Essex-based drug and alcohol charity *Open Road* has been established, and work is to commence in woodlands situated in Tendring. Green Light has been commissioned to provide expertise and conservation training for their clients.

Possible new work activities over the coming year include:

- A project to extend the charity's reach in Harlow, called '*Engaging with Young People and Nature in Harlow*'.
- A short time-limited project involving NEET young people in Norfolk, called '*Going Green & Getting Work Ready in Great Yarmouth*'.

WHAT NEXT . . .

Green Light Trust's central aim is to inspire and galvanise environmental action – to connect children and young people to nature and their environment; and also re-connect others who have been disengaged or, as often is the case in modern society, never connected. Recent funding successes have focused on the latter based on 'communities of interest', and mindful of contemporaneous research, this need to address – in a generic sense - people's disconnect with their immediate environment and nature.

Going forward more project work is required - it is an urgent social action priority. Moreover, this attempt to connect people with nature can easily be linked to the individual, and the community's, physical and mental health and well-being.

Connecting with nature, learning about it and then wanting to protect it are vital individual and societal actions. Green Light Trust will be working hard to make this a reality and centring its activities and growth in the areas where its charity roots are the strongest and focused on those young people at risk of disengaging from society and younger people generally.



humans . . . it helps us when we feel stressed . . .

The natural world has the capacity to improve our happiness . . . yet we aspire to levels of and types of consumption that are destroying the world, and have forgotten how to say enough is enough.

The estrangement grows and, as a result, we forget how ecosystems work. Our modern disconnections reduce our knowledge of the natural world, and reduce contact that would have a positive effect on our health.

In short, estrangement from natural places and living things is making us unhappy."

JULES PRETTY OBE, CENTRE FOR ENVIRONMENT & SOCIETY, UNIVERSITY OF ESSEX

"There is now a large body of research which proves that exposure to nature – even something as trivial as a view from a window – is good for the mental health of almost all

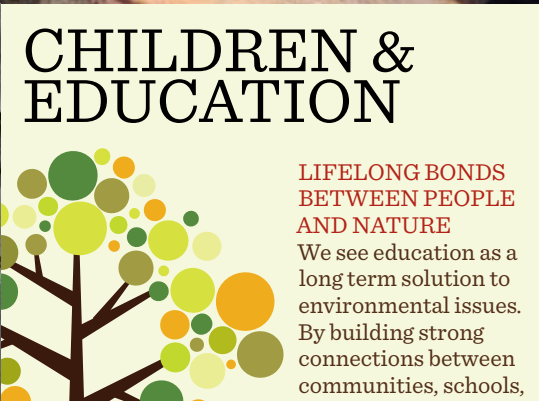
We know that we'll also need to extend our office and training facilities so we can do more and this will be based on sound evidence and independent reports on our impact and effectiveness.

We have devised three key outcomes by which we could then measure success, and report back upon:

- To generate annual income streams totalling £600,000 by 2012/13 allowing for the delivery of positive outcomes annually to 5,000 beneficiaries inclusive of 3,500 from marginalized and disadvantaged groups and geographical locations, from across the East of England

- To develop the skills, environmental and ecological knowledge, and commitment to undertake further voluntary or employed work on environmental projects, of 50 marginalised and disadvantaged people annually

- To increase the confidence, self-esteem, team-working abilities, physical and mental well-being of 500 marginalised and disadvantaged people annually.



CHILDREN & EDUCATION

LIFELONG BONDS BETWEEN PEOPLE AND NATURE

We see education as a long term solution to environmental issues. By building strong connections between communities, schools, businesses and nature we can make a lasting difference.

Our *Sensing the Wild* workshops use a storytelling format to help pupils with severe special needs, sensory impairment and autism connect with nature. Teachers, classroom assistants, nursery workers and playworkers all access our *Forest Schools* training – we provide OCN Level 1 and Level 3 accredited courses. For full details about our Forest Schools and Sensing the Wild work activities visit our website.

"The course was practical, thought provoking, intellectually

Children are at the heart of our work. We believe educating children about the environment, and helping teachers inspire a love of nature within them, is an essential step in tackling environmental issues.

We run a number of school programmes for children and courses for adults working in education, all with three key aims:

ENVIRONMENTAL

Working in partnership with Great Yarmouth & Waveney Mind, Green Light Trust delivered a project designed to encourage those experiencing mental health issues to develop a relationship with nature.

Sarah Moore, Leader Norfolk explains: *"This project involved supporting a group of Mind service users as they investigated, and photographed, the natural environment around Great Yarmouth. The group learned about local bird and marine life, landscape history and the offshore wind farm. The group accessed knowledge and expertise from a range of organisations including RSPB, the Natural History Museum, Norwich Castle Museum and E.on Climate & Renewables. Project participants worked collaboratively to produce two photographic leaflets about the town's local wildlife, which are now available from Great Yarmouth library. The library also hosted an exhibition of photographs taken over the course of the project."*

"The Green Light course is brilliant, I wish it was happening every week for a year." **PROJECT PARTICIPANT**



COMMUNITY & COHESION



We have four clear aims:

- To build a strong sense of community spirit
- To provide environmental education opportunities for local children
- To increase wildlife and biodiversity in the area
- To exchange knowledge and build friendships with communities overseas.

One alarming result of the economic recession has been a growing number of young people slipping through the net of education and employment.

We are now working hard to alleviate the plight of disaffected youth both rural and urban, by offering programmes of empowerment combining woodland/conservation skills with team building, social awareness and an opportunity for young people to re-connect with the natural world. This helps them to develop confidence, open new doors of possibility, and increase their general health and sense of well-being.

That's why helping communities to establish and maintain their own areas of natural beauty has become an essential part of our work. Planting and managing a community wild space brings local people together, and the stunning recreational area they create generates a feeling of pride and ownership amongst the community.

We are pioneering new programmes with the teenagers of a referral unit and also in Harlow schools; the clients of a drug rehabilitation agency in north Essex; and mental health service users in Norfolk and Suffolk.

Funding permitting, we also hope to be able to offer courses for Young Carers and other young people (not in education, employment and training) across East Anglia and beyond.

"In Suffolk, young people are getting the chance to develop new skills in conservation and craft activities after we received a grant of £83,598. Activities such as identifying tree species, shelter building, cooking, mulching and basic repairs will lead to skills like group working, health and safety awareness, hand tool use, navigational skills, activity planning and report writing."
GRENVILLE CLARKE, MANAGER

"All our new work with young people enables them to take part in a practical outdoor training programme that will combine conservation

techniques with survival skills and help build confidence, self-esteem and motivation. The aim will be to encourage a positive, hands-on relationship with the natural world and open new doors towards both future volunteering and work opportunities."
JAMES STACK, LEADER ESSEX

"Green Light Trust fits well with a noticeable interest from local service users in green voluntary opportunities and conservation projects within Great Yarmouth; it also goes some way toward addressing the current gap in provision in this area, whilst complimenting the local and sub-regional priorities of the area, which focus on and around issues such as worklessness, resident participation, health & wellbeing."

Green volunteering projects offer a useful way to engage otherwise hard to reach young people, giving them the opportunity to develop a range of useful soft-skills vital for entering or re-entering employment."
VOLUNTARY NORFOLK

EDUCATION FOR ALL
 Most of our schools programmes can be tailored for children of all ages and abilities, and our community projects are open to everyone - so far our work has touched the lives of over 90,000 children and adults.

ENGAGING AND INTERACTIVE LEARNING EXPERIENCES
 We include practical and theory work in all our education programmes. This combination of 'hands clean' and 'hands dirty' learning makes our sessions fun, engaging and memorable.

stimulating, interesting, inspirational, accessible - the best I've ever been on."
MELANIE, FOREST SCHOOLS LEADERS AWARD

"Thank you for the skilful, professional and sensitive way you have guided me on this journey - I'm ready to spread the word!" **LUCY, FOREST SCHOOLS LEADERS AWARD**



BUSINESS & DEVELOPMENT

Green Light Trust offers bespoke support for businesses to help them think beyond greenwash to improve their resource efficiency and their sustainability.

"All businesses need to get involved and realise that carbon cutting measures can be for the greater good, and also boost individual economic success too." **STEPHEN HOWARD, BUSINESS IN THE COMMUNITY**

The work undertaken with businesses focuses on reducing costs, improving their carbon footprint, developing the skills of their workforces and linking business activities with what is happening in local communities; often this involves creating Business WildSpace projects.

More information about our work with businesses can be found at www.greenlighttrust.org



Low Carbon Champions

Cut Carbon • Save Money • Be Competitive



Become one of the 75 small and medium businesses in Suffolk that will benefit by cutting at least 15% of their carbon emissions. Businesses that join the project will be eligible to receive:

- Free carbon audit
- 30 hours of mentoring for your 'Low Carbon Champion'
- Grant of up to £5,000
- Recognized award for carbon management

"You don't have to invest lots of money or make big changes to your business to save on your energy bills. The right combination of small changes, many costing nothing, can reduce your energy bill by £1,000s."

Carbon Trust (2010)



Low Carbon Champions is a three year partnership project between Suffolk County Council, Suffolk Climate Change Partnership and Choose Suffolk. The project is part-funded by the European Regional Development Fund and Suffolk.



Low Carbon Champions is a three year partnership project helping Suffolk companies engage their staff in efficiently managing resources to cut carbon, reduce costs and improve the business's marketability. Part-financed by the European Regional Development Fund and Suffolk County Council the project offers 75 small to medium sized businesses the opportunity to receive:

- A free carbon audit and action plan worth £1,000
- 30 hours of mentoring support to drive down costs and improve efficiency
- Up to £5,000 for implementing energy saving ideas
- Assistance in achieving a recognised award for carbon management

"Low Carbon Champions is a great way of greening your business, making it more marketable and competitive." Will Sambrook, **Business Development Manager**

CHAIRMAN'S MESSAGE

Green Light Trust has a new chairman of Trustees, Tom Stebbing. Tom first became involved in the work of the charity when he was just nine years old, now a flourishing architect in his late 20s and living locally he has this to say:



Taking over the role, which was brilliantly fulfilled previously by Douglas Pike, will, however, certainly prove a challenge. A challenge not lessened by the uncertain future that lies ahead for all of us, economically and environmentally.

But having known Green Light since its inception, I know that meeting challenges are all part of the 'GLT way'; which in just 21 years has helped save a rainforest on the other side of the world, tell its story to thousands of children here in the UK, and inspire a network of Community-owned WildSpaces across East Anglia and beyond.

Having seen as a child the incredible drama of saving a rainforest unfold before my very eyes, in later years I have been equally amazed by our enormous achievement of 'self-building' our RIBA award winning, 'carbon neutral' head-quarters building. Equally impressive has been our continuously evolving environmental education programmes to reach all parts of the community, not to mention our emerging role as a regional leader in accredited Forest Schools training provision. This is in the context of GLT's simple, core belief, instilled in me at primary school, that people of all ages and backgrounds benefit from reconnecting with their natural surroundings, a fact reflected by our ever increasing network of community groups realising their own local WildSpaces. Our work with individuals and communities may present challenges every now and again (it is very difficult to fund!) but the 'GLT way with people' never ceases to move and inspire me.

As delivery partners for Suffolk County Council's new 'Low Carbon Champions' scheme, we now have a massive opportunity to demonstrate how the 'GLT way with business' works too. Over the next three years GLT will work with 75 local companies, expanding on our work with organisations such as B&Q, Timbmet (Europe's largest timber importer), Quotient Bioresearch, Ridgeons, and Havebury Housing Partnership. The undoubted economic challenges facing the business community are daunting for everyone but GLT is positioned to inspire companies and individuals to reduce waste and consumption and reap the benefits of lower costs and improved employee wellbeing.

As newly elected Chair of an environmental charity in the midst of the most serious economic crisis for 80 years, with the critical environmental and social issues facing the world seemingly ignored as a result, I am probably entitled to feel a little daunted. But actually, I can see how the 'GLT way' makes us even more relevant than ever.

PATRON
Dr. Alan Knight OBE

TRUSTEES
Penny Carnill; Phil Driver; Heather Murphy; Maxime Narburgh; Douglas Pike; Tony Leigh-Pollitt; Sundeep Singh; Tom Stebbing (Chair) and Hugh Wolley

As part of the annual review planning process everyone involved in the work of the charity was asked a few questions:

✧ WHAT ARE YOU MOST PROUD OF? ✧ ‘We’re still here and celebrating **OUR 21ST ANNIVERSARY!**’ ✧ ‘Team spirit – getting through the difficult times’ ✧ ‘Winning European funding for the first time’ ✧ ‘Persuading long term project funder (Tudor Trust) to supply CORE funding’ ✧ ‘Being short-listed for Green Business of Year with the East Anglian Daily Times’ ✧ Working in partnership with other organisations, with the new ‘Communities of Interest’ projects and a heightened level of professionalism’

✧ WHAT HAVE WE ACHIEVED THIS YEAR, WHICH IS DIFFERENT FROM BEFORE? ✧ ‘Marginalised groups and people are getting involved positively in their natural environment’ ✧ ‘Four fresh corporate sponsorships secured and recognition of our partnership working with VIRGIN by being shortlisted for a national award’ ✧ ‘A dynamic new website’ ✧ ‘We are now licensed to provide wedding ceremonies at The Foundry’

✧ WHO HAVE WE MADE A DIFFERENCE TO, WHAT IS OUR SOCIAL IMPACT? ✧ ‘Disaffected and alienated young people across Norfolk, Suffolk and Essex’ ✧ ‘Those with mental health difficulties in Great Yarmouth’ ✧ ‘The new, and also the existing, communities developing their own WildSpace projects’

✧ WHAT HAS BEEN OUR ENVIRONMENTAL IMPACT? ✧ ‘Increased land now under management with some groups planting trees for local land owner or giving trees they have grown’ ✧ ‘More and more areas being created as WildSpaces across the East of England’ ✧ ‘Piloting a tree planting project in Ghana.’





GREEN LIGHT TRUST HQ, LAWSHALL
BURY ST EDMUNDS



FundRaising
Standards Board

We are members of the Fundraising Standards Board



Green Light Trust, The Foundry, Lawshall,
Bury St Edmunds, Suffolk IP29 4PJ
T: 01284 830829 E: info@greenlighttrust.org
www.greenlighttrust.org

Printed on Shiro Tree Free - paper from 100% non-tree fibres.
It is made using waste cotton and fibres from annually grown plants
including bamboo and bagasse.
Produced by eg consulting www.egconsulting.co.uk
and Lowenhoff Design www.lowenhoff.co.uk
Photographs by Laurence Cawley, Mark Ereira-Guyer
and as supplied.

2009-10 - OUR ACHIEVEMENTS & the HIGHLIGHTS

75

European funding for Low Carbon Champions programme – targeting

businesses **18,000** volunteer hours given to community *WildSpace* projects

throughout the region **Shortlisted** by the Institute of Fundraising for a National

Fundraising Award for partnership working with VIRGIN ECOMINDS

FUNDING SECURED to extend work with mental health service users helping

them to reconnect with nature in a woodland setting and learn skills **123** Forest

School leaders trained (Levels 1 & 3) **FOUR** year funding from the Big Lottery's

REACHING COMMUNITIES programme to work with **120** very disadvantaged

young people with the Suffolk Connexions Service **625** volunteer hours

(16 working weeks) donated by staff and others to extend our work,

and towards our Global Kinship projects **SKY TV** produces a special

programme exploring the charity's links with the tribes' people of Hunstein Range, Papua

New Guinea **New independent funders like the Essex Community Foundation, Mulberry**

Trust and Fowler, Smith & Jones Charitable Trust step forward to

support new work with at risk young people in Harlow **56**

Community-owned *WildSpace* projects now up

and running, and **160** acres now managed

by volunteer groups **HCD Memorial Fund** support the

creation and development of **FIVE** more Community-owned

WildSpace projects **2,134** people visit and

use the The Foundry.

"2010 marks
OUR 21ST YEAR.
Last year was
heavy going and
made worse by
the economic
recession. What
a change around,
Green Light Trust
is, this year, not
just surviving, it's
thriving!"

NIGEL HUGHES
CHIEF EXECUTIVE,
GREEN LIGHT TRUST